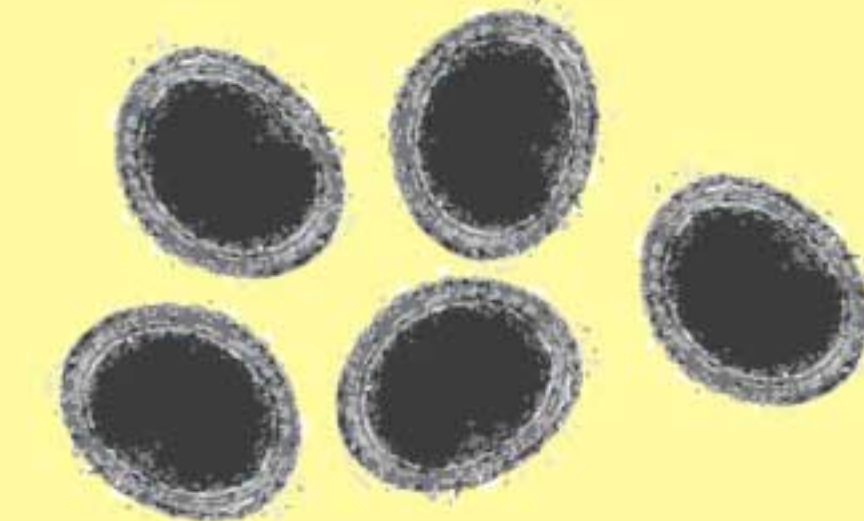


SMALL STRONGYLES

LIFE CYCLE



One horse can pass
75–100 million eggs
daily in the manure.



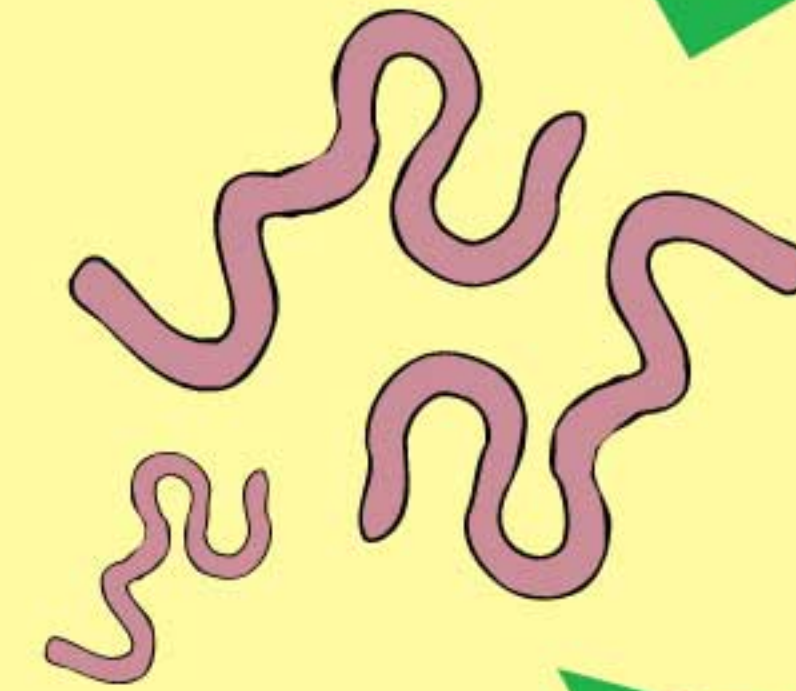
Larvae hatch
out of eggs
and climb up
on blades of
grass.



The horse eats the grass which
the eggs are attached to.



Larvae burrow into the wall of
the large intestine.



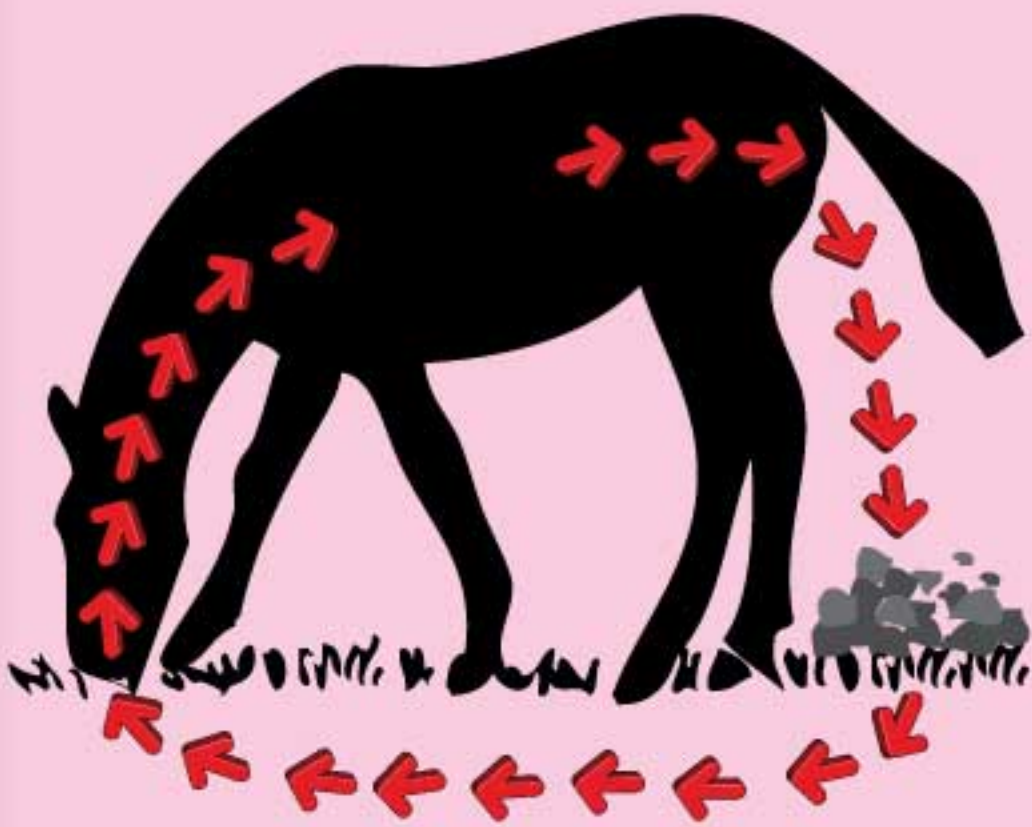
Larvae mature into adult
worms & then produce eggs
in the digestive tract.



SMALL STRONGYLES ARE BAD NEWS

Can contribute to unthrifty condition,
weight loss and poor performance

Can even cause colic & sometimes death



TIPS FOR YOUR Paddock

Clean manure from paddocks twice
a week

Harrow pastures only when it is hot and dry
– never when it is warm & moist

Separate pastures for young horses (under 18 months)
and adult horses (above 2 years)

Decrease the number of horses on each pasture if possible



CONSULT YOUR VET

Small strongyles are the parasite of most concern to the **ADULT** horse

Work with your vet to develop an appropriate deworming schedule

Resistance to dewormers is now a significant problem in small strongyles

Need selective deworming to target small strongyles and monitor through fecal analysis

Annual fecal egg count reduction test (FECRT) performed in summer will monitor the deworming program.